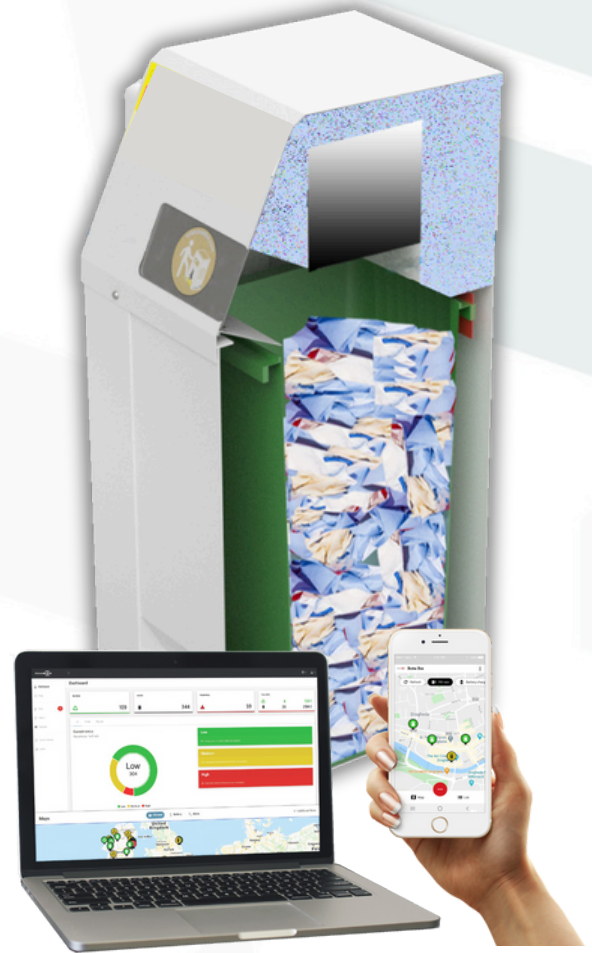




BRITEBIN™ ELECTROPAK is an **electrically powered compacting BriteBin™** which is the perfect solution for managing general and recycling waste across an indoor setting.

The **BriteBin™ Electropak** combined with the PEL **BriteBin™** software data management platform, allows waste collectors and councils the ability to monitor real-time fill-levels across their litter bin fleet.

By gaining insightful data recorded, it further allows for proactive deployment of appropriate collection resources to only those bins requiring service.



BRITEBIN™ OPERATIONAL PROCESS

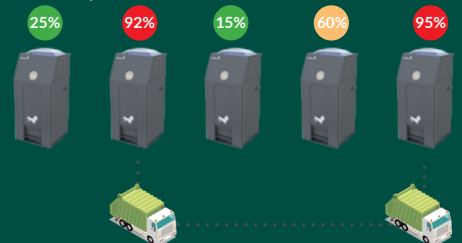


The BriteBin™ compacts waste until full. The unit takes a real-time fill-level reading every 3 seconds.



Once full, the BriteBin™ generates an alert to the BriteBin™ data management platform to notify the commanding authority.

The commanding authority then deploys resources to only those units requiring service. This creates efficiency and saves money.



BENEFITS OF THE PEL BRITEBIN™

- Reduces carbon emissions.
- Lowers waste collections costs.
- Helps create a cleaner environment.
- Zero running costs.
- Sealed, non-touch unit.
- Eliminates single use plastic bin liners.
- Creates efficiency across waste collection.
- Standard internal wheelie bin or liner.



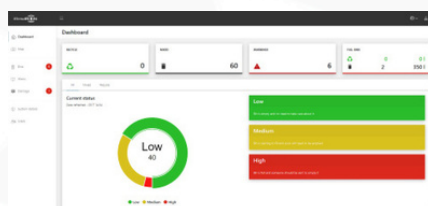
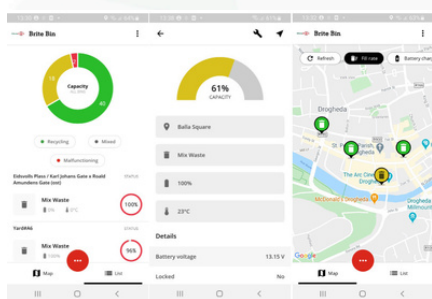
TECHNICAL SPECIFICATIONS

| | |
|------------------------------|---|
| Dimensions (WxDxH) | BBS 120ltr: 592x600x1345mm BBS 240ltr: 685x749x1478mm BBS 360ltr: 690x917x1498mm |
| Litter Opening | Hopper or Flap opening |
| Power Supply | Electrical Supply |
| Service Door Location | Side / Front / Rear |
| Capacity | 120ltr – 10 times the volume of a standard street bin / 240ltr – 20 times the volume of a standard street bin / 360ltr – 30 times the volume of a standard street bin |
| Colour | Grey Ral 7024 (Standard) |
| Optional Additions | <ul style="list-style-type: none"> • Bespoke Stickers / Partial wrap • Aperture Dimension and Shape (Rectangular / Circular) • Ashtray (Integrated / External) • Auto-Flap Option • Non-Compacting Partner Bin • Audio Playback • USB Charging |
| Material | Zentec Galvanised Steel, Polyester TGIC Powder-Coat Finish (Stainless Steel Option Also Available) |



Our award winning BriteBin™ Software solution is the leading intelligence across the smart waste industry. The BriteBin™ Software solution operates wirelessly through the cloud. It generates real-time data transmitted across the Sigfox, NBIoT and GSM networks.

The BriteBin™ Software solution allows customers to monitor fill-levels across their entire BriteBin™ fleet, and proactively deploy collection resources to only those bins requiring service. An integrated BriteBin™ sensor is mounted to the interior of the unit, which accurately monitors litter levels and communicates the fill-level alerts in real time to the PEL BriteBin™ data management platform. The BriteBin™ software processes the data received, and issues an alert via email or SMS to the appropriate authority when a bin needs to be emptied.



At PEL, we are constantly innovating. The BriteBin™ software is not limited to monitoring real-time street litter fill levels. There are a multitude of areas in which the BriteBin™ software can be applied effectively to reduce carbon emissions, lower costs and create efficiency across collection services, for example:

- ▶ Bottle Banks
- ▶ Clothes Banks
- ▶ Post Boxes
- ▶ Underground Containers

**Minimum order required. We reserve the right to modify design and specifications without notice as part of our commitment to continuous improvement*