

# PEL5000A

## MILL SIZE BALER

The **PEL5000A** Baler is designed for locations handling large amounts of recyclable waste, cutting waste volume and disposal costs by up to 90%.

### HIGHLIGHTS



The PEL5000A maximises space by removing the need for extra bins or skips to store recyclable materials.



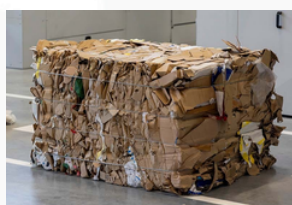
The PEL5000A baler is simple to operate, featuring a wide opening and a lever-action door handle that removes the need to manually flatten large cardboard or plastic.



Produces bale weighing 300-500kg



Automatic bale cycle with a 45 second cycle time.



### BALER DIMENSIONS

HEIGHT	3020MM
WIDTH	2070MM
DEPTH	1300MM
WEIGHT	1,760KG
FEED OPENING (H X W)	120 x 76CM

### BALER PERFORMANCE

COMPACTION FORCE	50T
CYCLE TIME	45 SECONDS
POWER SUPPLY	3 PHASE 380-415
MOTOR	7.5kW
NOISE LEVEL	78dB (A)

### BALE DIMENSIONS

HEIGHT	950MM
WIDTH	1200MM
DEPTH	800MM
BALE WEIGHT CARDBOARD	300-500KG
BALE WEIGHT PLASTIC	300-500KG

### 5000A

4 X STEEL GALVANISED WIRES	3CM
OR 4 X ROLLS OF TYING CORD	16CM
BALE EJECTION SYSTEM	MECHANICAL

PEL reserve the right to alter specifications and details without prior notification



Station Road, Ballindine,  
Co. Mayo, F12 E0Y5  
Ireland

T: +353 (0)94 936 6923  
UK: +44 (0)20 8340 0436  
[www.pelmfg.com](http://www.pelmfg.com)