

PEL3500A

MILL SIZE BALER

The **PEL3500A** Baler is perfect for facilities generating large amounts of recyclable waste, cutting waste volume and disposal costs by as much as 90%.

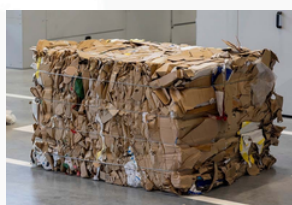
HIGHLIGHTS

➤ The PEL3500A frees up space by eliminating the need for additional bins or skips to store recyclable materials.

➤ The PEL3500A baler is easy to use, with a wide aperture and a lever-action door handle that removes the need to manually break down large cardboard or plastic.

➤ Produces bale weighing 200–350kg

➤ Automatic bale cycle with a 45 second cycle time.



BALER DIMENSIONS

HEIGHT	3020MM
WIDTH	1870MM
DEPTH	1200MM
WEIGHT	1,540KG
FEED OPENING (H X W)	100 x 76CM

BALER PERFORMANCE

COMPACTION FORCE	35T
CYCLE TIME	45 SECONDS
POWER SUPPLY	3 PHASE 380–415
MOTOR	5.5kW
NOISE LEVEL	76dB (A)

BALE DIMENSIONS

HEIGHT	950MM
WIDTH	1000MM
DEPTH	700MM
BALE WEIGHT CARDBOARD	200–350KG
BALE WEIGHT PLASTIC	200–350KG

3500A

4 X STEEL GALVANISED WIRES	3MM
OR 4 X ROLLS OF TYING CORD	16MM
BALE EJECTION SYSTEM	MECHANICAL

PEL reserve the right to alter specifications and details without prior notification



Station Road, Ballindine,
Co. Mayo, F12 E0Y5
Ireland

T: +353 (0)94 936 6923
UK: +44 (0)20 8340 0436
www.pelmfg.com