

# PEL2000A

## MILL SIZE BALER

The **PEL2000A** Baler is ideal for any premises producing large quantities of recyclable wastes. Waste volume and disposal costs are reduced by up to 90%.

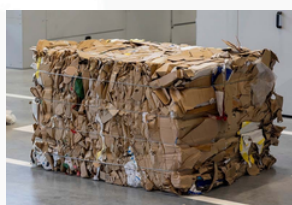
### HIGHLIGHTS

➤ The PEL2000A creates more space by removing the need for extra waste bins or skips to store recyclable materials.

➤ The PEL2000A baler is user-friendly, featuring a wide aperture and a lever-action door handle that eliminates the need to manually break down large cardboard or plastic.

➤ Produces bale weighing 120-200kg

➤ Automatic bale cycle with a 40 second cycle time.



### BALER DIMENSIONS

HEIGHT	2650MM
WIDTH	1500MM
DEPTH	1100MM
WEIGHT	750KG
FEED OPENING (H X W)	100 x 65CM

### BALER PERFORMANCE

COMPACTION FORCE	20T
CYCLE TIME	40 Seconds
POWER SUPPLY	220V SINGLE PHASE
MOTOR	2.2kW
NOISE LEVEL	75dB (A)

### BALE DIMENSIONS

HEIGHT	800MM
WIDTH	1000MM
DEPTH	800MM
BALE WEIGHT CARDBOARD	120-200KG
BALE WEIGHT PLASTIC	120-200KG

### 2000A

4 X ROLLS OF TYING CORD	9MM
BALE EJECTION SYSTEM	AUTOMATIC

*PEL reserve the right to alter specifications and details without prior notification*



Station Road, Ballindine,  
Co. Mayo, F12 E0Y5  
Ireland

T: +353 (0)94 936 6923  
UK: +44 (0)20 8340 0436  
[www.pelmfg.com](http://www.pelmfg.com)